



**A Home.
A Job.
A Friend.
A Neighbourhood.**

Parkdale Activity-Recreation Centre
Annual Impact Report 2022–2023



Our passion for providing member-driven programming, employment, food security, social space and safe supportive affordable housing, has evolved and grown to meet our members' needs for over 40 years.

Our Mission

A community where people rebuild their lives.

We work with people who live with mental health and substance use challenges. They may also struggle with issues related to poverty such as houselessness and food insecurity. We have a drop-in centre with social, art and recreation activities, and offer a wide range of services and programs including housing, financial, employment and outreach support.

The simple act of walking through our doors is what makes a person a PARC member – choosing to give back, create and grow is how members contribute and build community.

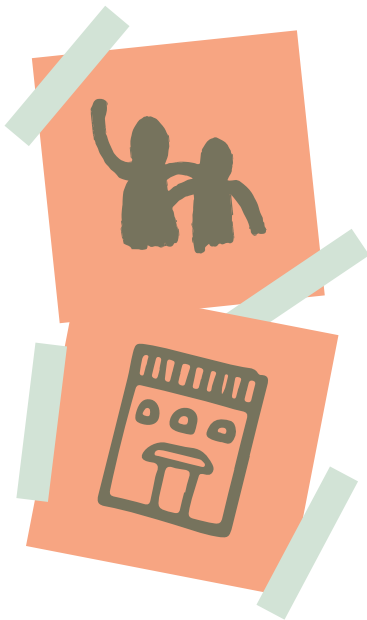
Our Vision

Everyone living with dignity and safety, with enough resources to explore and achieve their potential.

Our Values

Respect | Dignity
Inclusion | Compassion
Caring | Kindness | Trust

PARC Drop-in, Services and Supports



: We continued to prioritize our community meal service for our homeless members, with the rest of meals for takeout, seven days a week.

: Over the year 18,600 meals were in a shared and interactive setting.

: Our Case Management team was formally trained through OISE in Cognitive Behavioral Therapy (CBT) and Applied Suicide Intervention Skills Training to support members.

: Hepatitis C testing and treatment referrals began out of the nursing station one day a week.

: Peer shelter workers started to do accompaniments again, offering direct engagement and support for appointments.

: 3\$5& UHWXUQHGW R FDPS WKLV \HDU IR since 2019 with 29 members and 7 staff in October for four days in a peaceful outdoor setting with a variety of activities.

The Parkdale People's Economy

Over the past three years, the Parkdale People's Economy (PPE) has led a participatory planning process to build a renewed Community Plan for Parkdale. The network engaged over **400 community members, 50 local businesses, and 30 community organizations** through a participatory planning process.

1. Community Wellbeing
2. Community Mapping
3. Visions to Actions



The Plan will guide the values-based collaboration of the PPE network towards a vision of economic, racial, and climate justice through six core themes: housing justice, climate action, solidarity economy, community health and safety, food systems, and social infrastructure.

Learn more and how to get involved at: parkdalepeopleseconomy.ca

Our Funders

Funding for PARC means we can continue to operate, providing nutritious meals, programs, services, community building, and the provision of safe and dignified homes for our community.

We thank all of our funders helping us build a strong foundation for PARC's future.



**SHEILA KOFFMAN
MEMORIAL FUND**



The Amazing Impact of our PARC Donor Community

The support of our donor community comes in so many ways. We welcomed new individual and monthly donors to PARC and are always so moved by the generous gifts, goods and messages sent to us throughout the year and for our specific campaigns.

Over the year, we saw more local businesses fundraising or donating goods in support of PARC and we are very touched by this generosity given the difficult time during the pandemic.

As waitlists for housing, programs and meals get longer, we are truly grateful to all of our donors, thank you from team PARC!



MAKE IT MONTHLY!

Every new monthly gift of \$20+ has even MORE IMPACT in MARC

A Home. A Job. A Friend. A Neighbourhood

Become a PARC MONTHLY DONOR
parc.on.ca/ways-to-give

Financial Report

The graphs represent the combined statements of operations for all PARC programs and services excluding capital activity and depreciation.

33% Ontario Health (OH) / Ministry of Health (MOHLTC)

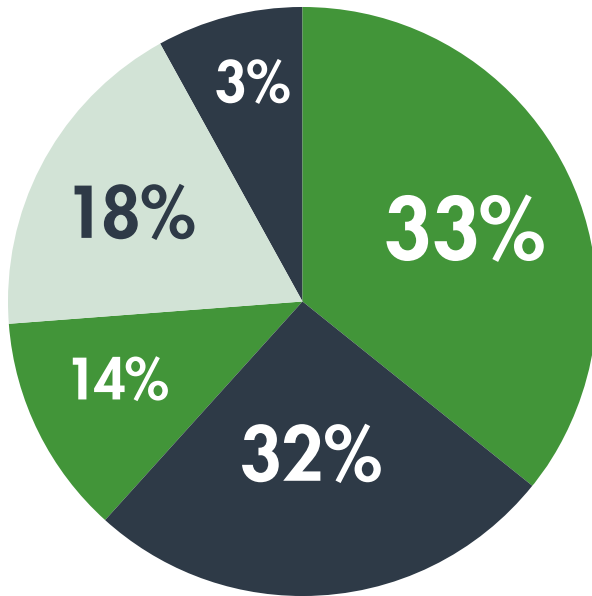
32% City of Toronto

18% Rents, Subsidies (additional 9.1% in subsidies included with MOH & City)

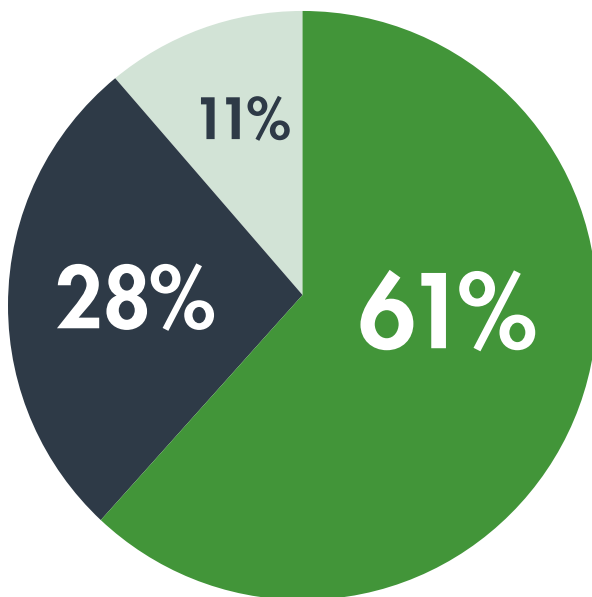
14% Foundations, Grants, Donations

3% Sales, and Other

Operating Revenue
\$6,814,029



Operating Expenses
\$6,802,858



61% Direct Programming

28% Residential, Program and Commercial Facilities

11% Program Support, Resource Development, Admin

We Remember

Ahamad
(Ash) Asmeed

Sylvain
(Frenchie) Addison

Glen Harris
Neville Pollard

Lee Brown
Rebecca MaKay

Donna Baan
David Willet

Peter Harvison
Leslie Andrews

Kim Cook

Robbie Mitchell

Michael Lazare

Herman Hinds

Anna Manna

Peter Fain

Lucy Cristofari

Stephen Jack



In the Heart of Parkdale for over 40 Years

parc.on.ca



@parctoronto

Parkdale Activity-Recreation Centre

1499 Queen St. West, Toronto, ON M6R 1A3

Charity #: 12967 8231 RR 0001

Sign up for
PARC e-news

